

HIGHLIFE® COLLECTION

GRANDEE®



FreshWater®
Salt System
Included



100% Filtration
SilentFlo Circulation



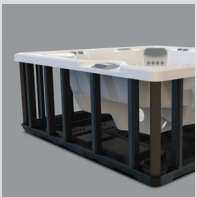
Moto-Massage® DX



Super Energy
Efficient



Color LCD
Touchscreen



Polymer Substructure
& Base Pan



Shown with Alpine White Shell
and Java Cabinet

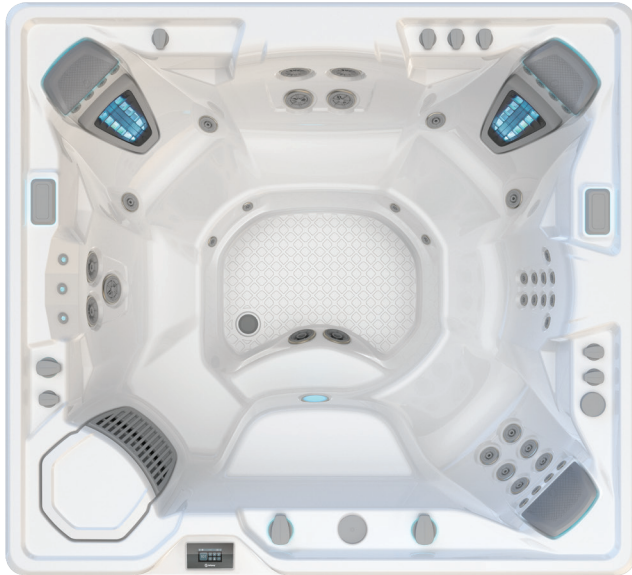
| | | | |
|---------------|----------------|-------------|----------------|
| People | Seating | Jets | Voltage |
| 7 Seats | Open | 49 Jets | 230 V |

Size
8'4" x 7'7" x 38" | 254 cm x 231 cm x 97 cm

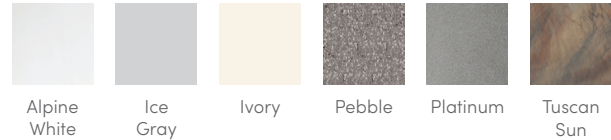
Water Care
FreshWater® Salt System Included

HIGHLIFE® COLLECTION

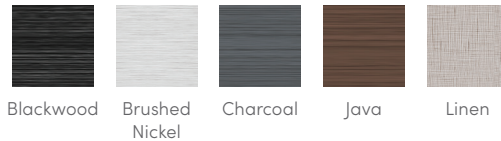
GRANDEE®



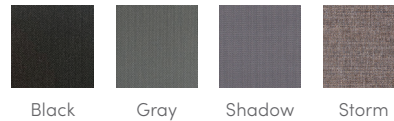
SHELL COLORS



CABINET COLORS



COVER COLORS



CABINET AND SHELL COLOR OPTIONS*

| Cabinet Colors | Java | Charcoal | Blackwood | Linen | Brushed Nickel |
|---------------------|---|--|--------------------------------------|---|--------------------------------------|
| Shell Colors | Alpine White Ice Gray Ivory Tuscan Sun Pebble | Alpine White Ice Gray Platinum Tuscan Sun Pebble | Alpine White Ice Gray Platinum | Alpine White Ivory Tuscan Sun Pebble | Alpine White Ice Gray Platinum |

LEGENDARY MASSAGE

49 Personalized-Control Jets

- 2 Moto-Massage® DX (2)
- 2 SoothingStream®
- 2 JetStream®
- 3 Rotary Hydromassage
- 2 Directional Hydromassage
- 10 Hydrostream®
- 26 Directional Precision®

EASY WATER CARE

| | |
|--------------------------|---|
| Water Care System | FreshWater® IQ System Salt System Included Smart Monitoring System Optional |
| Filtration System | 100% No-bypass Filtration Exclusive, High-flow Tri-X® Filters 325 sq. ft. Filtration Area |

LEADING ENERGY EFFICIENCY

| | |
|-------------------------|---|
| Jet Pump 1 | Wavemaster® 9000; One-speed, 2.5 HP Continuous Duty, 5.2 HP Breakdown Torque |
| Jet Pump 2 | Wavemaster® 9200; Two-speed, 2.5 HP Continuous Duty, 5.2 HP Breakdown Torque |
| Circulation Pump | SilentFlo® 5000 Quiet Continuous Filtration |
| Heater | No-Fault® 4,000 W / 230 V |
| Insulation | Multiple Layers of Foam Insulation; Certified to California Energy Commission (CEC) and APSP 14 energy efficiency standards for portable spas |
| Cover | WeatherPro™ 4" Tapered Custom-Fit with Hinge Seal |

SIZE

Dimensions 8'4" x 7'7" x 38" / 254 cm x 231 cm x 97 cm

CAPACITY

Seating Capacity 7 seats
Water Capacity 455 gallons / 1,725 liters
Weight 790 lbs. / 360 kg dry; 5,810 lbs. / 2,645 kg filled**

ADDITIONAL FEATURES

| | |
|------------------------------|---|
| Smart Spa Technology* | Hot Spring Spas App Powered by the Connected Spa Kit |
| Water Feature | BellaFontana® with 3 illuminated arcs of water |
| Cover Lifters* | CoverCradle®, CoverCradle II, Lift 'n Glide®, or UpRite® |
| Steps* | Highlife Collection Steps (Blackwood, Charcoal, Java, Linen) |
| Entertainment* | Bluetooth® Wireless Sound System |
| Control System | IQ 2020® with Color LCD Touchscreen 230 V / 50 amp, 60 Hz (Includes GFCI protected sub-panel) |
| Lighting System | Luminescence® multi-color four-zone |
| Cooling System* | CoolZone™ |

*Optional Accessories

*No special orders or shell substitutions available. Actual colors and products may vary from print representation. See dealer to verify.
 **Includes water and 7 adults weighing 175 lbs. each.