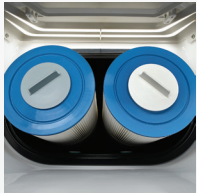


FreshWater® IQ  
System Ready



Dual Action Filtration  
SilentFlo Circulation



FiberCor®  
High-Density Insulation



Color LCD Display

## LIMELIGHT® COLLECTION

# BEAM™



*Shown with Alpine White Shell  
and Sable Cabinet*

### People

4 Seats

### Seating

Open

### Jets

19 Jets

### Voltage

115 or 230 V

### Size

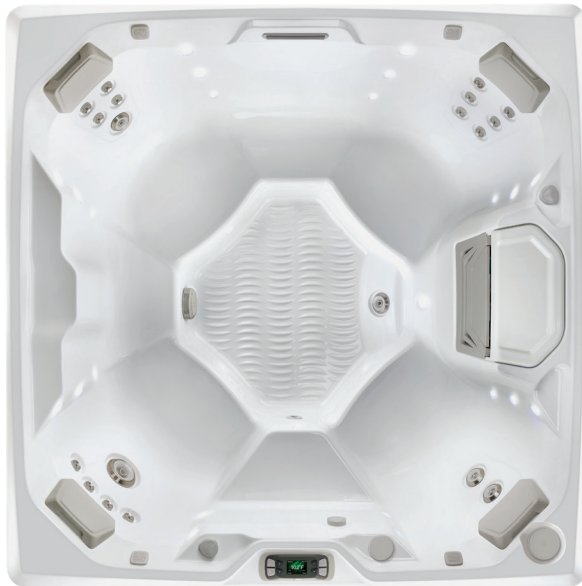
6'8" x 6'8" x 33" | 203 cm x 203 cm x 84 cm

### Water Care

FreshWater®IQ System Included

# LIMELIGHT® COLLECTION

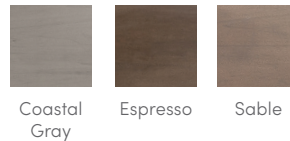
# BEAM™



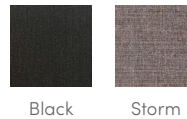
## SHELL COLORS\*



## CABINET COLORS\*



## COVER COLORS



## LEGENDARY MESSAGE

### 19 Personalized-Control Jets

- 1 XL Dual Rotary jet
- 2 Standard Single Rotary jets
- 2 Standard Directional jets
- 14 Directional Precision® jets

## EASY WATER CARE

**Water Care System** FreshWater® IQ System  
Salt System Ready  
Smart Monitoring System Optional

**Filtration System** Dual action, 100 sq. ft., top loading

## LEADING ENERGY EFFICIENCY

**Jet Pump** **Beam I**  
Wavemaster® 7000; Two-speed, 1.65 HP Continuous Duty,  
3.5 HP Breakdown Torque

**Beam II**  
Wavemaster® 9000; Two-speed, 2.5 HP Continuous Duty,  
5.2 HP Breakdown Torque

**Circulation Pump** SilentFlo 5000® for quiet, continuous filtration

**Heater** **Beam I**  
No-Fault® 1,500 W / 115 V or 6000w / 230v

**Beam II**  
No-Fault® 6,000 W / 230 V

**Insulation** FiberCor® Insulation; Certified to California  
Energy Commission (CEC) and APSP 14  
energy efficiency standards for portable spas

**Cover** WeatherPro™ 4" Tapered Custom-Fit with Hinge Seal

## SIZE

**Dimensions** 6'8" x 6'8" x 33" / 203 cm x 203 cm x 84 cm

## CAPACITY

**Seating Capacity** 4 seats

**Water Capacity** 295 gallons / 1,115 liters

**Weight** 700 lbs. / 320 kg dry; 3,860 lbs. / 1,750 kg filled\*\*

## ADDITIONAL FEATURES

**Smart Spa Technology\*** Hot Spring Spas App Powered by the Connected Spa Kit

**Water Feature** Vidro® backlit ribbon waterfall

**Cover Lifters\*** CoverCradle®, CoverCradle II, Lift 'n Glide®, or UpRite®

**Steps\*** Limelight Collection Step (Coastal Gray,  
Espresso, and Sable)

**Entertainment\*** Bluetooth® Wireless Sound System

**Control System** **Beam I**  
IQ 2020® with LCD control panel  
115 V / 20 amp, 60 Hz (Includes G.F.C.I. protected power cord)  
or 230 V / 50 amp, 60 Hz

**Beam II**  
IQ 2020® with LCD control panel  
230 V / 50 amp, 60 Hz (Includes GFCI protected sub-panel)

**Lighting System** Raio® multi-color interior points of light  
Exterior multi-color lighting with timer

**Cooling System\*** CoolZone™

*\*Optional Accessories*